



JOEBLOW™ BOOSTER

User's Guide

GB

CHARGE MODE

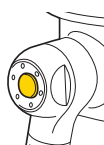


INFLATE MODE



Top Mount Gauge + Mode Selector

Air Release Button



SmartHead™ Valve fits Presta and Schrader valve

Extra Long Hose

Air Chamber



• 160 psi / 11 bar

• Please read the instruction before first use.

HOW TO INFLATE TUBELESS TIRE

STEP 1

1.1



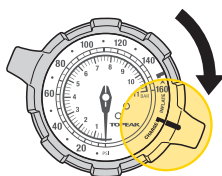
Follow tire manufacturer's recommended installation instructions for tubeless tires.

1.2



Tighten valve and ensure tubeless tire has been installed correctly before inflation.

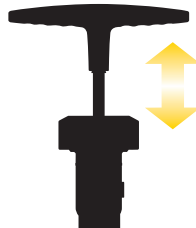
STEP 2



Engage the valve and turn to **CHARGE** mode.

DO NOT squeeze tire when engaging pump head.

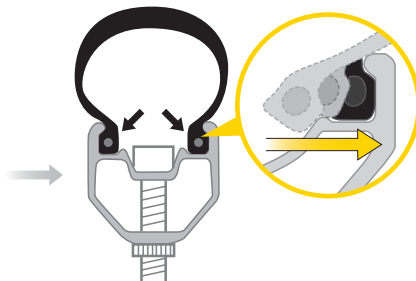
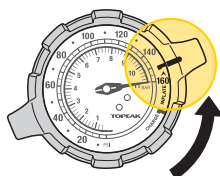
STEP 3



Pump and store air in Air Chamber.

Pump to 160 psi / 11 bar for best results.

STEP 4



Turn to **INFLATE** mode then a strong blast of air will inflate the tire at the same time. If the installation is perfect, the bead of tire will snap into the rim as shown during inflation.

STEP 5



Continue to pump to desired pressure immediately. Press the Air Release Button to adjust the pressure as necessary.

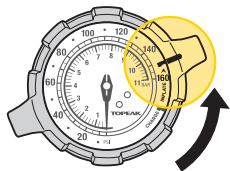
NOTE

If inflation fails, deflate tire and check tire installation, rim and valve. Follow inflation sequence to install and inflate tire correctly.



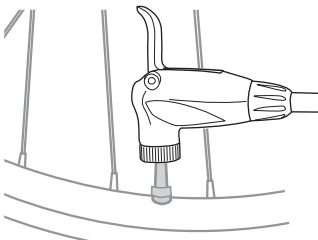
HOW TO INFLATE NORMAL TIRES

STEP 1



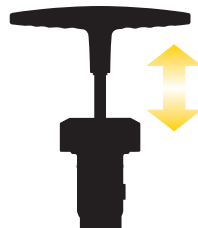
Turn to **INFLATE** mode.

STEP 2



Engage the valve.

STEP 3



Pump to desired pressure. Press the Air Release Button to adjust the pressure as necessary.

WARNING

1

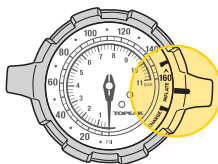
There are two common reason for inflation failure.

Tire was not installed properly.

Valve was not tightened sufficiently.

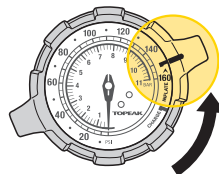


2



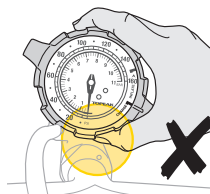
DO NOT turn Mode Selector to mid-point between modes. The pump will not function properly and the gauge will display *0 psi/ 0 bar.

3



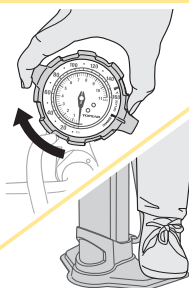
Release air and turn mode selector to **INFLATE** after each use. For safety reasons, DO NOT store pressurized air in Air Chamber when not in use.

4

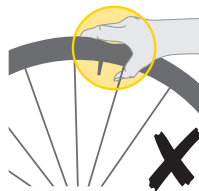


To avoid injury, turn Mode Selector carefully.

RECOMMENDED OPERATING POSITION



5



DO NOT squeeze tire when engaging pump head as it may separate tire and rim and prevent a good seal when inflating.

WARRANTY

2-year Warranty: All mechanical components against manufacturer defects only.

Warranty Claim Requirements

To obtain warranty service, you must have your original sales receipt. Items returned without a sales receipt will assume that the warranty begins on the date of manufacture. All warranties will be void if the product is damaged due to user crash, abuse, system alteration, modification, or used in any way not intended as described in this manual.

* The specifications and design are subject to change without notice.

Please contact your Topeak dealer with any questions. For USA customer service, call: 1-800-250-3068 www.topeak.com

6 DO NOT exceed the maximum air pressure of your tubeless tire. Follow tire manufacturer's recommended installation instructions for tubeless tires.