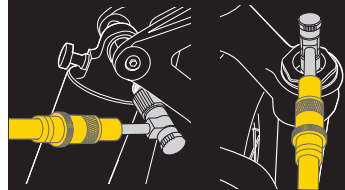




Due to larger volume, using a floor pump with Pressure-Rite Shock Adapter will quickly inflate a fork or shock air-spring. In order to prevent over inflation and possible damage to the air chamber, we strongly recommend using a floor pump with this shock adapter to 20 psi / 2 bar below your target pressure and inflate to the final pressure using a standard mini shock pump.

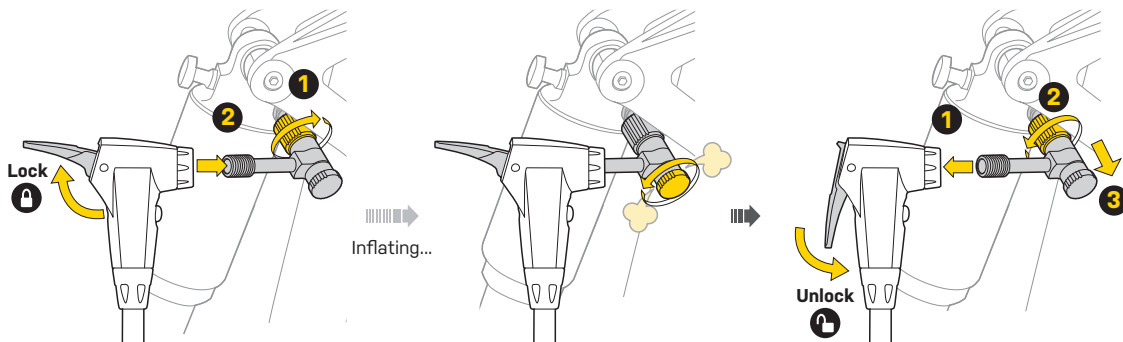


### INFLATION NOTES:

1. Make sure the air release valve is fully closed before installing Pressure-Rite on Schrader valve of fork or shock.
2. Thread Pressure-Rite onto Schrader valve.
3. Carefully inflate airspring fork or shock to desired pressure. Use Air Release Knob to fine tune air pressure.
4. After fine tuning air pressure, close Air Release Knob completely.
5. Remove Pressure-Rite from from Schrader valve.

### CONNECTING TO REAR SHOCK

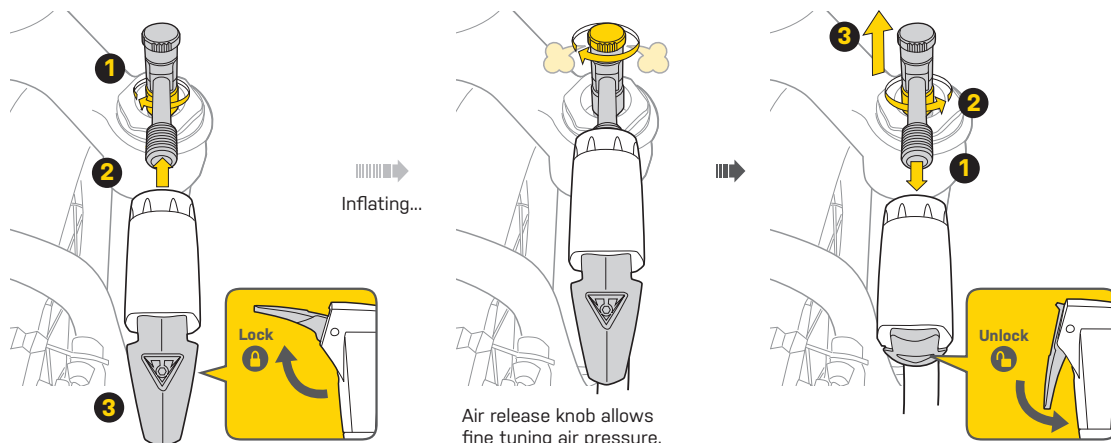
BEFORE INFLATING YOUR REAR SHOCK, CHECK AND DO NOT EXCEED FACTORY RECOMMENDED PRESSURES.



Air release knob allows fine tuning air pressure.

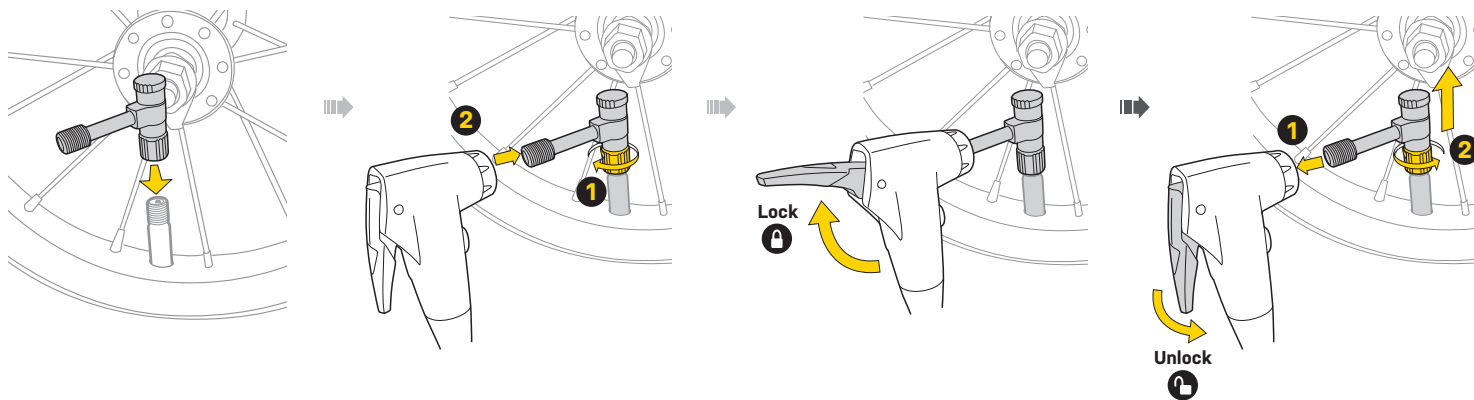
### CONNECTING TO AIRSPRING FORK

BEFORE INFLATING YOUR AIRSPRING FORK, CHECK AND DO NOT EXCEED FACTORY RECOMMENDED PRESSURES.



Air release knob allows fine tuning air pressure.

### CONNECTING TO PUMP HEAD ON 12" or 14" WHEEL



### WARNING

1. When inflating shock or tube, the pressure reading will rise quickly to the pressure inside the shock or tube. Pressure will need to be increased until the check valve inside the Pressure-Rite device is opened. You will notice a slight decrease in pressure when the check valve opens. When this occurs, your gauge will indicate the correct pressure reading. Pump to desired pressure.
2. After desired inflation pressure is reached, disconnect pump head from the Pressure-Rite device first before disconnecting the Pressure-Rite device from the shock or tube. If your pump has a pressure release button, activate it to release pressure before disconnecting pump head from the Pressure-Rite device.
3. Do not leave Pressure-Rite connected if it's not being used to inflate.

### WARRANTY

2-year Warranty: All mechanical components against manufacturing defects only.

#### Warranty Claim Requirements

To obtain warranty service, you must have your original sales receipt. Items returned without a sales receipt will assume that the warranty begins on the date of manufacture. All warranties will be void if the product is damaged due to user crash, abuse, system alteration, modification, or used in any way not intended as described in this manual.

\* The specifications and design are subject to change without notice.

Please contact your Topeak dealer with any questions.  
For USA customer service call: 1-800-250-3068  
www.topeak.com